

EF-B-MX2TS7-C Blast Chill only Refrigeration System

Standard Features

- Control panel, electrical box, evaporator block and air deflector
- 7" ergonomic touch screen with large keys for ease of use
- User friendly operation with easy to use functions:
 - Hard or soft chill mode
 - Easy switch to probe or timer mode
 - Self Adaptive intelligent chilling mode
- Auxiliary functions: ice cream hardening, ventilated drying, multiple timers, customisable multiple phases, raw fish sanitation
- 40 program cycles with favourites key – shortcuts to last 9 programs used
- Pre-chilling cycle key to maximise efficiency
- Automatic hold mode after each cycle
- Manual defrosting with automatic control of time
- Multi-point core temperature probe
- Timer mode or continuous run
- Automatic fan stop when opening the door
- Pre-wired electrical box with connection terminal
- Fixing of the evaporator on a vertical wall
- Supply of accessories for fixing the evaporator on a vertical wall (isothermal panels), with injected polyurethane foam. For other panel types please advise for specific fittings
- ** All external panels to be supplied by others **
- Assembly required

Please refer to Moffat price list for options and accessories

Technical data

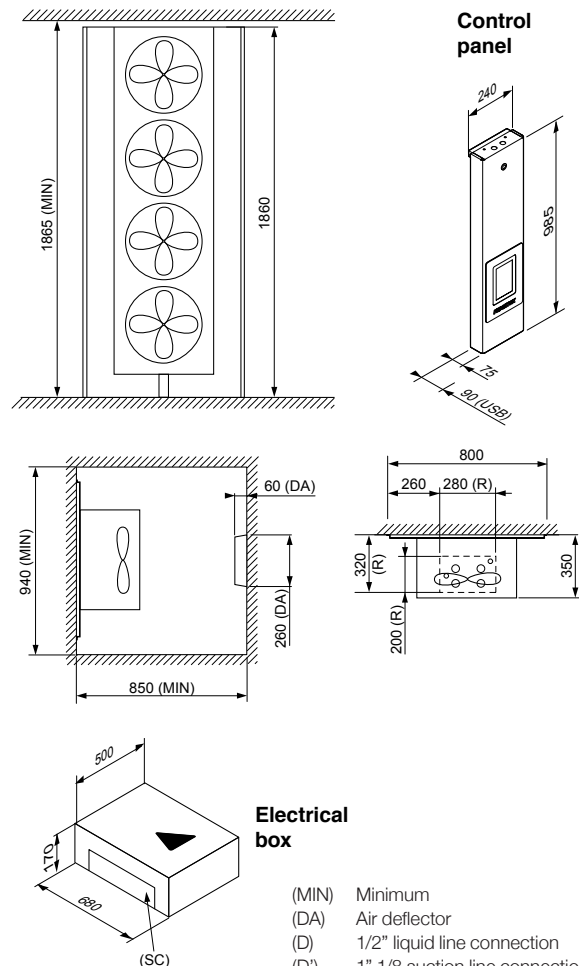
Recommended internal room dimensions	W 900mm x D 1020mm x H 1885mm
Load Capacity	160kg*
Electrical Connections	3P+N+E, 400-415V, 50/60Hz, 20A, 4.4kW
Waste	Provide for a water runoff & trap
Nett weight	115kg
De-icing waste runoff tray and pipework not included, to be supplied by panel installer	
Remote condensing unit version (remote condensing unit not included)	
Remote condensing unit requirements based on dimensions listed above - Refrigerant type R452A	
Condensing capacity upright Blast Chiller 7.1kW / 11.3kW / 16.2kW for the respective evaporation temperatures of -20/-10/0°C	
Remote condensing unit with pump down control	

* Note – Load capacities may vary depending on the thermal conductivity of the food being chilled, the thickness of product and container used

Australia	New Zealand
moffat.com.au	moffat.co.nz
Moffat Pty Limited 740 Springvale Road Mulgrave Victoria 3170 Australia Telephone +613-9518 3888 Facsimile +613-9518 3833 vsales@moffat.com.au	Moffat Limited 45 Illinois Drive Izone Business Hub Rolleston 7675 New Zealand Telephone +64 3-983 6600 Facsimile +64 3-983 6660 sales@moffat.co.nz



Dimensions



Electrical box

- (MIN) Minimum
- (DA) Air deflector
- (D) 1/2" liquid line connection
- (D') 1" 1/8 suction line connection
- (R) cables and pipe output
- (SC) Electric cables output
- (USB) With USB option

Disclaimer: All unit capacities are based on subjective testing. Moffat accepts no liability for production values. In line with policy to continually develop and improve its products, Moffat Limited reserves the right to change specifications and design without notice.

© Copyright Moffat Ltd
AN-FRI-S-2101

